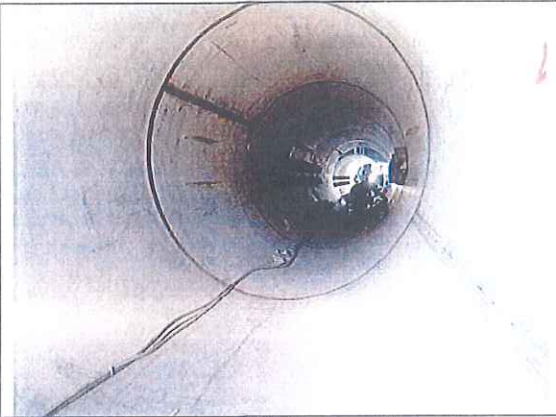


Nozzles during visual inspection – view of welder stamping and a typical weld



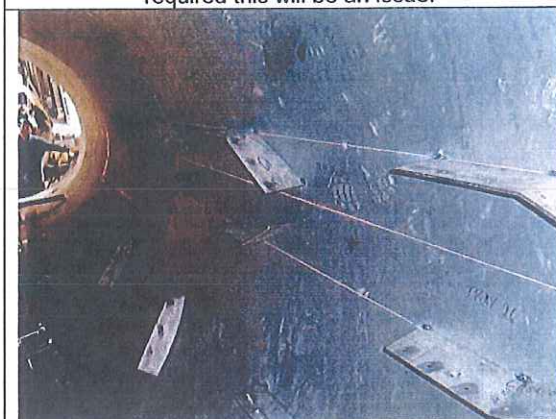
A view inside during the visual inspection



View of weld internals that were checked. The round seam these cross was not radiographed and although it was verified to be spot only if by repairs full RT was required this will be an issue.



View of weld internals that were checked – close up of the issues mentioned left.



View of internals



View of the fit up of internals in-process