

Pictures



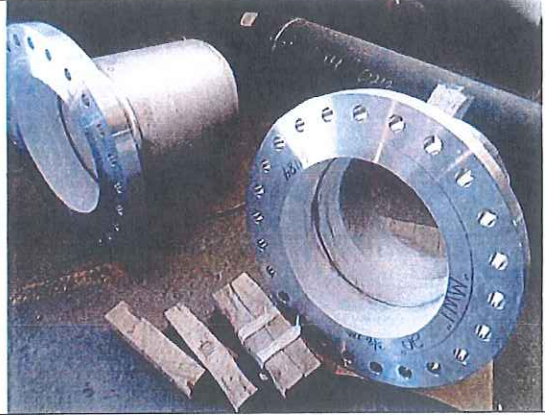
Overview of one section of the tower. Just on the edge of this picture was a carbon steel shell. This concern was discussed and they understood any contamination would need to be cleaned.



Overview of another section of the tower



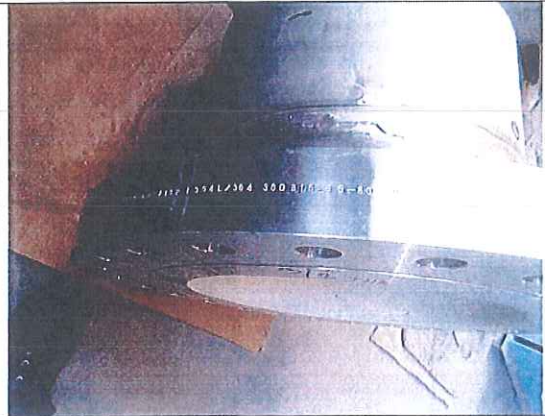
Overview of top head



Nozzles during visual inspection- these are MW 1 and MW 2



Nozzles during visual inspection



Nozzles during visual inspection – view of material stamping